

Georgia's  
Transportation  
Systems



SS8E1

# Formatting

The font visible in the pdf and pps version of this document will not show up on your computer unless you have the fonts installed.

I downloaded the fonts for free from Courtney Keimer. Click [here](#) to download the fonts.

While all are wonderful, I use CKquirky for my headings and CKfriendly for body text. You do not need to change the font yourself. Once installed, this PowerPoint will view correctly. Hint: you may need to close out of it and reopen it to see the changes.

To install, follow the steps [here](#).

View more of Courtney's products by clicking the icon in the acknowledgments section of this presentation.

## Standard Addressed


SS8E1 Explain how the four transportation systems (road, air, water, and rail) of Georgia contribute to the development and growth of state's economy.

- a. Evaluate the ways in which the Interstate Highway System, Hartsfield-Jackson International Airport, deepwater ports, and railroads interact to support the exchange of goods and services domestically and internationally.
- b. Explain how the four transportation systems provide jobs for Georgians.

## Standard Changes

There were extensive changes in the Economic Understandings standards, so they will all be summarized in one location.

\*three economics standards when there were previously five; goods and services produced throughout history are in history standards, not economics; no discussion of free trade; four transportation systems moved from geography standard to economics; no specific Georgia-based businesses, industries are main focus; revenue sources moved to government standards; much more detailed unit for personal money management



Georgia's  
Transportation  
Systems

# Transportation Systems

- The interaction of the four transportation systems is essential to the state's economy.
- Georgia, being the “transportation hub” of the southeast, transports people and products quickly and efficiently via air, road, railway, and sea to national and global markets, helping businesses save time and money.
- These systems together received 7.6% of Georgia's 2017 fiscal year budget.



# Interstate Highway System

- The interstate highway system is essential to Georgia's economic success.
- Georgia boasts highways that facilitate speed and reliability for shipments to the rest of the United States and world.
- Shippers in all industry sectors depend on Georgia's roadways to safely and efficiently transport more than \$620 billion of cargo each year on this system.
  - This includes the 20,000 miles of high performance roadways and 1,200 interstate highways, including I-75, I-85, I-20 in the Atlanta area, and I-95 along coastal Georgia.



I-95 (above) runs from south Florida to northern Maine, passing through Georgia on the journey.





# Interstate Highway System

- Approved funding for new roadway infrastructure in Atlanta and near the ports of Savannah and Brunswick will create 150 miles of new roadway capacity.
- These roadways enable Georgia companies to speedily and efficiently distribute products over 100 motor freight carriers and extensive rail and highway systems.
- Using the nation's interstate highway system, Georgia's products can now reach approximately 80% of Americans overnight.
- Many industries have relocated to Georgia because of the easy access to interstates that are well-maintained and rarely closed due to inclement weather.

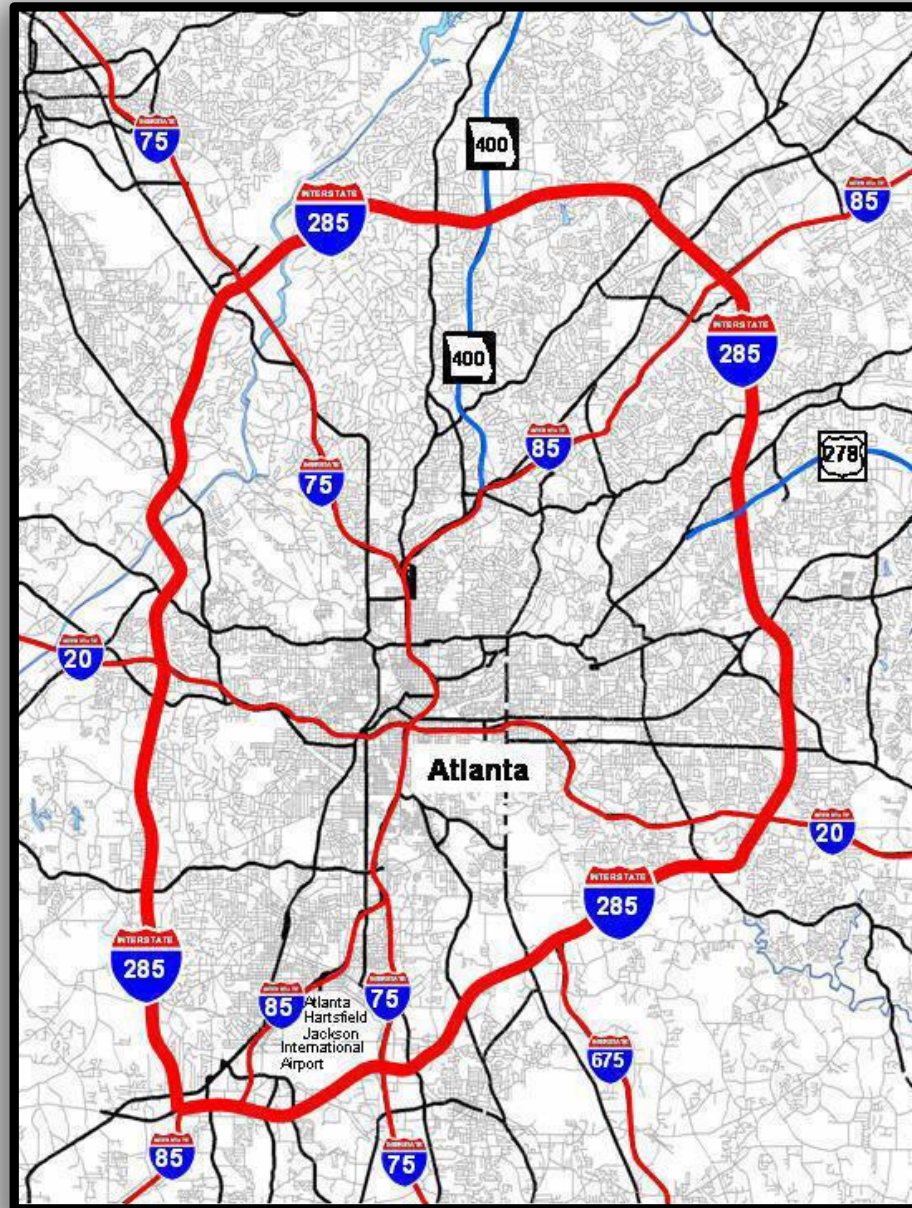
# Interstate Highway System

- Interstate highways (I-85, 75, and 285) pass near Hartsfield Jackson International Airport, one of the busiest airports in the nation.
- Arriving in Atlanta via the airport, business travelers and tourists impact the state's economy by utilizing the interstates to travel to beaches, mountains, and other tourist and business destinations.
- Airport cargo areas have docks that have convenient access to the interstate highways for the quick and efficient transport of goods to their destination.





The Truckpass at the Hartsfield-Jackson International Airport (above) processes goods every day. The interstates in and around Atlanta (right) are some of the busiest in the state.



# Interstate Highway System

- Nearly all freight shipments by Georgia businesses (85%) are carried to their destination via truck.
- Truck shipments in Georgia are expected to reach \$993.6 billion by 2040.
- The connection between the airport and interstate highways allows Georgia products to be transported quickly to US consumers.

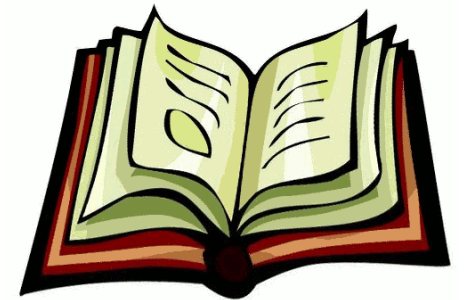




Utility traveled from all over the region to help Georgia and other southern states restore power after the devastating effects of Hurricane Irma in 2017.



# Georgia Stories – Interstate Highway System



[http://www.gpb.org/georgiastories/stories/interstate\\_highway\\_system](http://www.gpb.org/georgiastories/stories/interstate_highway_system)

# Hartsfield-Jackson International Airport

- Hartsfield-Jackson Atlanta International Airport is the channel for 100 million passengers per year and handles more than 625,000 metric tons of cargo on 32 air carriers, including Delta Airlines (headquartered in Atlanta).
- More than 100 trucking companies expedite cargo deliveries via ground (interstate and local roads) and rail transportation throughout the state and the US.
- Three cargo complexes enable rapid handling of goods so they can be moved to their destinations or ports by roadways and by rail.
- Also, located at the airport is a 250 acre Georgia Foreign Trade Zone that streamlines low cost international commerce.



Pictured above is the Hartsfield-Jackson Atlanta International Airport. Delta airlines was founded in Georgia and its headquarters (right) is located near the Atlanta airport.



# Hartsfield-Jackson International Airport

- The Perishables Complex, approved by the US Department of Agriculture and the only one in the Southeast, expedites fast and efficient inspection of time-sensitive shipments to ground transportation.
- Eighty percent of the US market is within a two-hour flight from Georgia.
- The airports impact on the regional economy of Georgia (particularly the Atlanta region) generates \$23.5 billion per year.





Delta airlines is primarily a passenger airline while FedEx strictly carries cargo across the nation and world.

Notice the Delta airlines planes in the background of the photograph on the right. Both photos were taken in Atlanta.





# Deepwater Ports

- Another component of Georgia's transportation system that is vital to the state's economy is the deep water ports of Savannah and Brunswick.
- Georgia products are exported to all parts of the world via these ports, while foreign products enter the US through these ports.
- Governed and operated by the Georgia Ports Authority, Georgia's ports are among the fastest growing ports in the US.
- The port of Savannah handles approximately 80% of the goods entering Georgia via ship and has immediate access to interstates I-95 and I-16.

Brunswick Port



Savannah Port



# Deepwater Ports

- The port's two terminals handle bulk cargoes, large containers and roll on/roll off items, such as automobiles and other wheeled vehicles.
- The smaller port in Brunswick handles a significant amount of products, including general cargo, bulk items, and automobiles, through three terminals.
- The Georgia Ports Authority also support the inland barge facilities of Bainbridge and Columbus.
- Liquid and dry bulk commodities, including chemicals and oil, are transported through these port facilities to ground transportation for delivery to Georgia and US companies.



## Bainbridge Inland Port







The Columbus Inland Port uses its ease of access to the Chattahoochee River to transport goods.





# Railroads

- Historically, railroads have been essential to the economy of Georgia.
- While the other forms of transportation have taken the lead in moving people and goods throughout the state and nation, railroads still operate lines successfully in Georgia.
- Georgia, ranked #3 in the US in rail accessibility in 2015, has access to more rail miles (4,700 miles) than any other state in the Southeast.
- Intermodal (transportation involving more than one form of carrier, such as truck and rail or truck, ship, and rail), bulk, and automotive shipments utilize the rails that connect to a national market.
- Though currently operating on a smaller scale than the other forms of transportation, railroads are an essential component to the success of moving goods to destinations throughout the state and country.

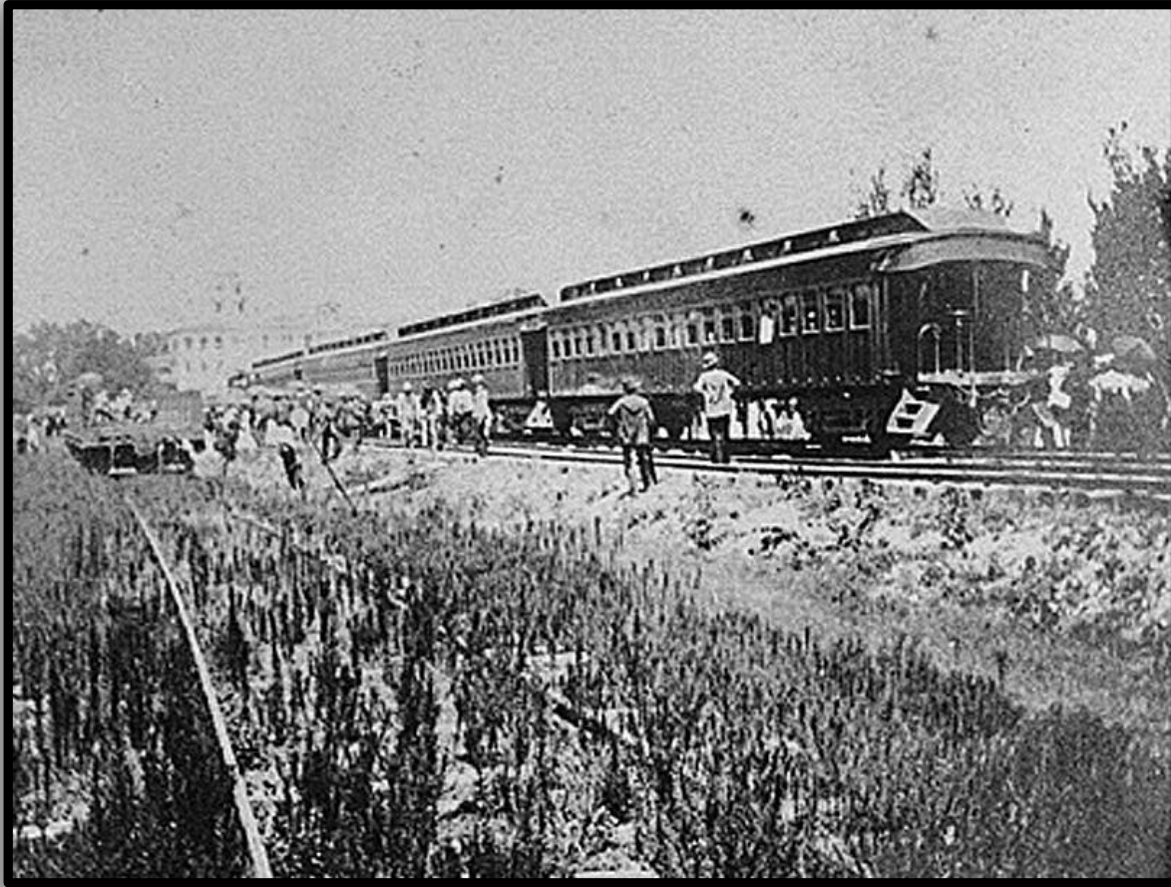


Amtrak's Crescent train is shown pulling into the Brookwood Station in Atlanta in 2000. Passenger service is available in Georgia through two Amtrak routes.

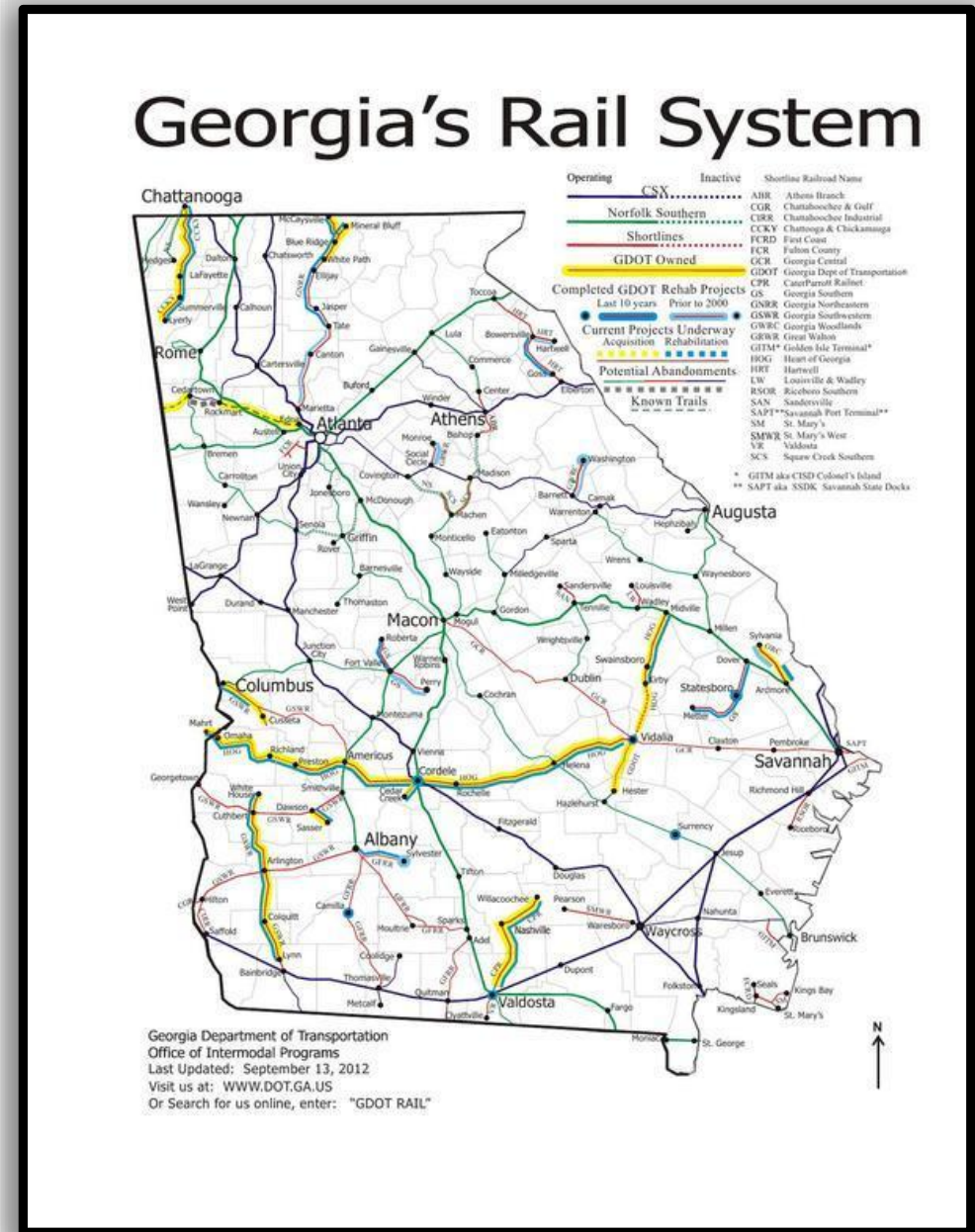
A Norfolk Southern engine is pictured in 2007. Norfolk Southern and CSX are the only major railroad lines still operating in Georgia.



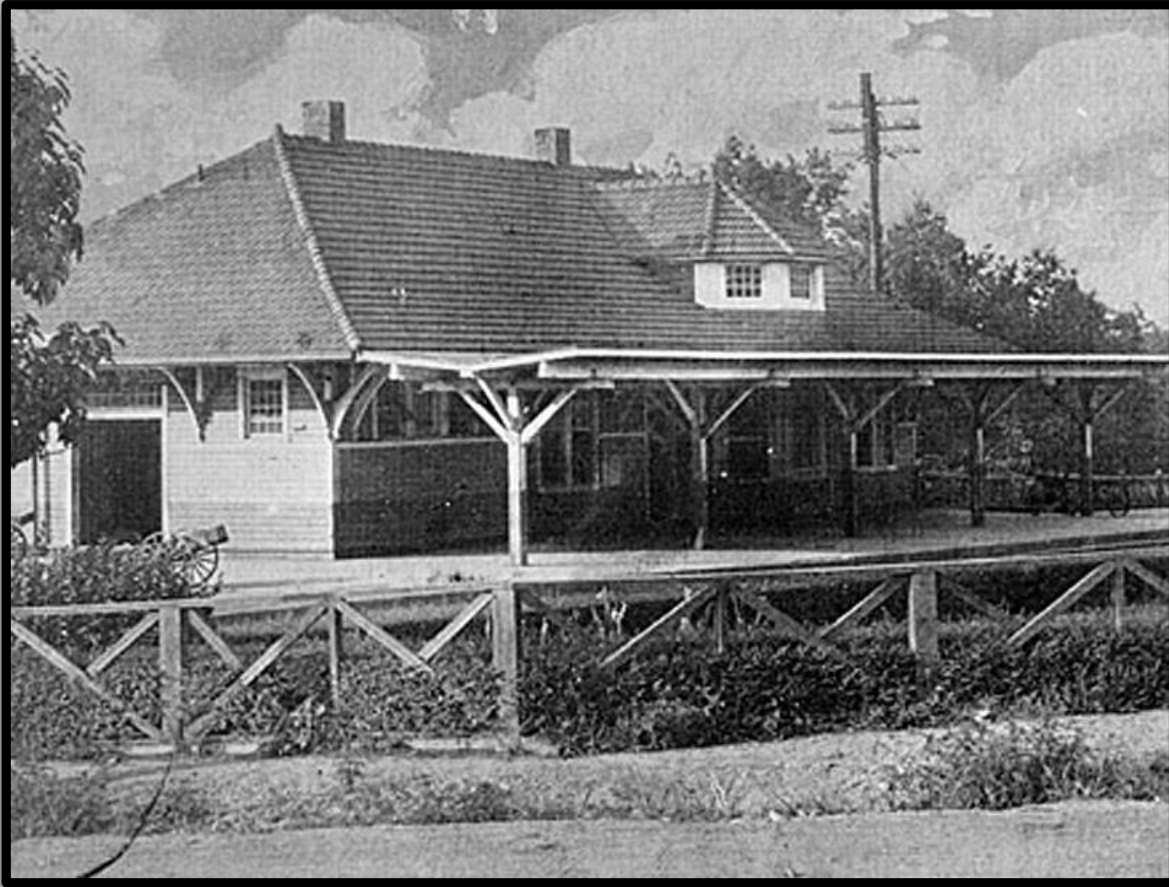




Bystanders greet the arrival of the first train on the Tifton, Thomasville, and Gulf Railroad in Thomasville, on July 20, 1900.







The depot at Bremen in Haralson County, pictured circa 1925, was built for the Southern Railway. Norfolk Southern, which bought Southern, still uses the lines for its freight trains.

Passengers pose for a photograph, circa 1901, at Gallemore, a community in Twiggs County located between Macon and Danville.



Development and  
Growth of the  
State's Economy



# Job Creation

- A factor that impacts the economy regarding transportation is job creation.
- It takes an enormous number of people doing specialized jobs to create, prepare, transport, and sell all of the products imported and exported from Georgia.
- The transportation systems are either directly or indirectly responsible for the employment of thousands of people.
  - A strong, employed workforce is always the basis of a sound economy.
- Over 5,000 companies employ 110,000 Georgians to move goods, generating over \$50 billion in revenue.
- Over 30,000 companies rely on cargo movers.
- Private transportation companies employ over 700,000 people in Georgia and contribute over \$500 billion of yearly revenue.

# Job Creation

- The design, construction, and maintenance of Georgia's transportation infrastructure supports the equivalent of almost 110,000 full-time jobs across all sectors of the state's economy.
- These workers earn \$3.9 billion annually.
- Over 1,900,000 full-time jobs in Georgia in key industries like tourism, retail sales, agriculture, and manufacturing are completely dependent on the state's transportation infrastructure network.
- These employees earn \$70.4 billion in wages and provide an estimated \$12.8 billion in state and local income, corporate and unemployment insurance taxes, and the federal payroll tax.

## Job Creation

- Georgia's deep water ports support over 350,000 full and part-time jobs, which is 8.4% of Georgia's total employment (as defined by a survey of households).
  - This means that one job out of every 12 is in some way dependent on the ports.
- Hartsfield-Jackson International Airport is "the economic jewel" of Georgia as it generates \$34.8 billion in economic impact for Atlanta and provides more than 63,000 jobs onsite, making it the state's largest employer.



# Job Creation

- Over the next 20 years, the airport plans to modernize its Domestic Terminal, expand cargo operations and concourses, replace parking facilities, and develop a hotel and mixed-use complex.
  - These changes will further solidify Hartsfield-Jackson as a beacon of economic strength and customer service in Georgia.
- Clearly, abundant job opportunities requiring specialized skills are a direct and indirect result of Georgia's transportation systems.

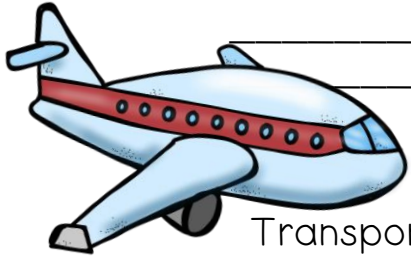
Name: \_\_\_\_\_ Date: \_\_\_\_\_

# Pick the Path

Read the transportation scenarios below. Determine the best, most efficient method to complete each scenario. Use the four systems you learned to make your decisions.

## Scenario A:

Transport cars from the Kia factory in West Point, GA to France.



Scenario B:  
Transport tourists returning from their vacation in Savannah back to their home in Arizona the fastest way possible.

---

---

## Scenario C:

Deliver 200 tons of sheetrock from Denmark to several construction companies in Atlanta..

---

---



## Scenario D:

Transport a farmer's products to a farmer's market several towns over.

---

---

## Scenario E:

Deliver an organ for transplant from a patient in Nashville, TN to a hospital 20 minutes outside of Atlanta.

---

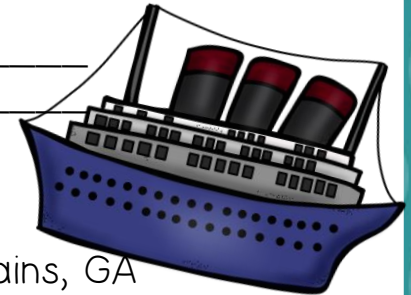
---

## Scenario F:

Move heavy farm supplies from Plains, GA to Kentucky.

---

---



Name: \_\_\_\_\_ Date: \_\_\_\_\_

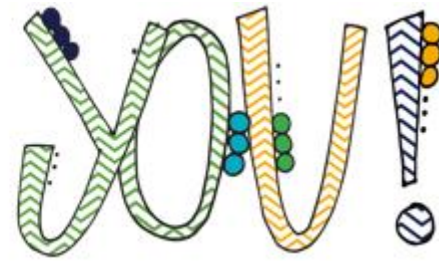
# ABC's of Jobs

Be creative! Using all letters of the alphabet, name a job that is created by one of the four transportation systems. Make sure you use each system at least 5 times. Use I for Interstate-Highway System, H for Hartsfield Jackson Airport, D for Deepwater Ports, and R for Railroads.

A : \_\_\_\_\_ System : \_\_\_\_\_  
B : \_\_\_\_\_ System : \_\_\_\_\_  
C : \_\_\_\_\_ System : \_\_\_\_\_  
D : \_\_\_\_\_ System : \_\_\_\_\_  
E : \_\_\_\_\_ System : \_\_\_\_\_  
F : \_\_\_\_\_ System : \_\_\_\_\_  
G : \_\_\_\_\_ System : \_\_\_\_\_  
H : \_\_\_\_\_ System : \_\_\_\_\_  
I : \_\_\_\_\_ System : \_\_\_\_\_  
J : \_\_\_\_\_ System : \_\_\_\_\_  
K : \_\_\_\_\_ System : \_\_\_\_\_  
L : \_\_\_\_\_ System : \_\_\_\_\_  
M : \_\_\_\_\_ System : \_\_\_\_\_

N : \_\_\_\_\_ System : \_\_\_\_\_  
O : \_\_\_\_\_ System : \_\_\_\_\_  
P : \_\_\_\_\_ System : \_\_\_\_\_  
Q : \_\_\_\_\_ System : \_\_\_\_\_  
R : \_\_\_\_\_ System : \_\_\_\_\_  
S : \_\_\_\_\_ System : \_\_\_\_\_  
T : \_\_\_\_\_ System : \_\_\_\_\_  
U : \_\_\_\_\_ System : \_\_\_\_\_  
V : \_\_\_\_\_ System : \_\_\_\_\_  
W : \_\_\_\_\_ System : \_\_\_\_\_  
X : \_\_\_\_\_ System : \_\_\_\_\_  
Y : \_\_\_\_\_ System : \_\_\_\_\_  
Z : \_\_\_\_\_ System : \_\_\_\_\_





I hope you enjoyed using this product as much as I enjoyed creating it. My wish is that your students enjoy learning the content through an engaging, attractive presentation. I do whatever I can to make a teacher's job easier, so please consider this an extension of that desire.

If you feel inclined, please visit my shop for other products you'll enjoy, or leave feedback so I can better my products.



Your download comes with one license for the product. It is not transferrable, and is only to be used by the purchaser. Additional licenses may be purchased. Please feel free to use this in your personal classroom.

It is a violation of the terms of use to:

1. Share this presentation with anyone who has not purchased a license.
2. Profit off of this presentation.
3. Post this online.
4. Remove the copyright and identifying information.

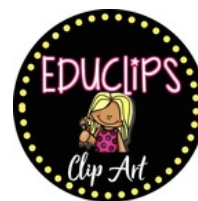
Feel free to share this with students on a password protected, educational site.



# SHOUT OUT

Help me yell a huge THANK YOU to the stores who created the clipart, fonts, and digital papers used to create this product.

Check out their stores!



Information retrieved from:

Jackson, E. L. (1999). The Georgia studies book: our state and the nation. Athens: Carl Vinson Institute of Government, University of Georgia.

Blankenship, G., Ph.D., & Wood, V. (2009). Georgia CRCT Test Prep 8th Grade Social Studies. Lilburn, GA: Clairmont Press, Inc.

London, B. (2005). Georgia and the American Experience. Atlanta, GA: Clairmont Press.

Georgia Public Broadcasting. (2016). Georgia Stories. Retrieved from

<http://www.gpb.org/georgiastories>

United States. Georgia Department of Education. Georgia Studies Teacher Notes for the Georgia Standards of Excellence in Social Studies. N.p., 31 May 2017. Web.

All images have been retrieved from Google Images

Don't forget to re-visit my store!

Click the monster

